

Curlyleaf Pondweed in the Briggs Chain of Lakes: 2021

Briggs Lake (#71-0146)

Julia Lake (#71-0145)

Rush Lake (#71-0147)

Surveyed May 28, 2021



Survey, Analysis, and Reporting by:

James A. Johnson – *Aquatic Ecologist, Freshwater Scientific Services, LLC*



Purpose of Survey

These surveys were conducted to locate and delineate areas of curlyleaf pondweed (*Potamogeton crispus*, henceforth referred to as CLP) in Briggs Lake, Julia Lake, and Rush Lake in the late-spring of 2021 (posttreatment). This information was intended to assess the effectiveness of the 2021 CLP treatment and identify any substantial areas of dense CLP remaining after treatment that could be considered for treatment in the future.

Survey Method

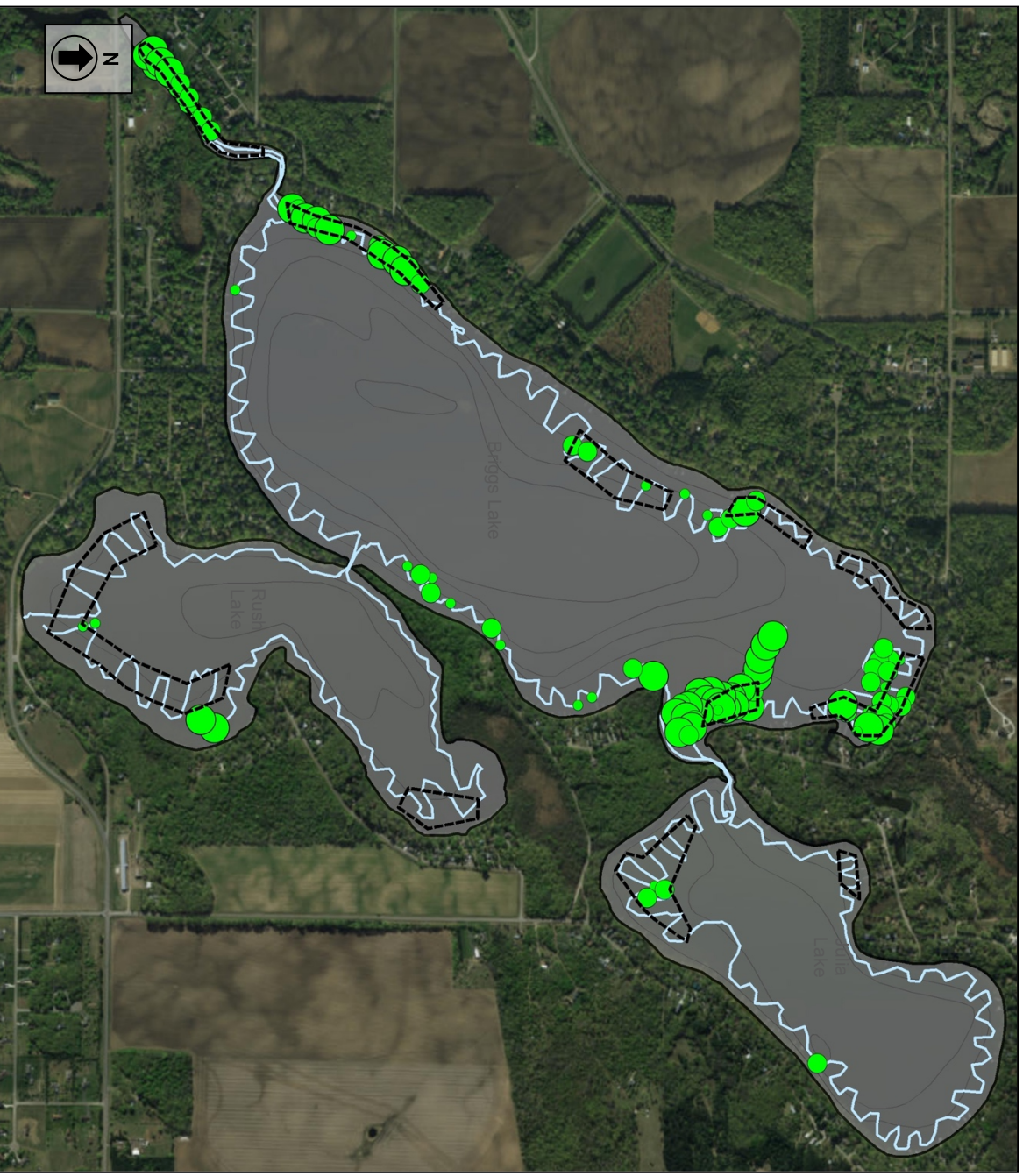
CLP Delineation Surveys

Freshwater Scientific Services surveyed the vegetated portions of Rush, Briggs, and Julia Lake on May 28, 2021 (posttreatment). During each of these surveys, we navigated a meandering path over the search areas. While navigating this search path, we used a combination of surface observations, rake tosses, and sonar readings to locate and delineate areas of CLP. Sonar and visual assessments were conducted continuously, with subsequent rake tosses to assess CLP abundance at locations where plants were not identifiable from the surface. When we encountered CLP plants, we marked the location, recorded the water depth, and rated the density of the growth using visual and rake density scores as described in the table below.

Score	Visual	Rake
1	Light / Solitary plants	1-2 stems
2	Moderate / Scattered dense patches	3 to 9 stems
3	Dense / Uniform dense growth	10+ stems

For rake samples, we dragged a sampling rake over approximately 10 square feet of lake bottom and recorded the CLP density based upon the number of plants (stem count) retrieved on the rake. The recorded water depths and density scores were linked to the appropriate GPS locations and then mapped using desktop GIS software.

Briggs Chain of Lakes Curlyleaf Pondweed Delineation Survey: 2021 (posttreatment)




Curlyleaf Pondweed

- Search Path
- ▭ Treated Plots

CLP Density

- 1
- 2
- 3

Surveyed: May 28, 2021 (posttreatment)
Methods: Rake, Visual, Sonar
Surveyor: JA Johnson
 Certified Lake Manager
www.NALMS.org

Map produced for the
Three Lake Improvement District by:

15771 Creekside Lane
Osseo, MN 55369
fxm/lake.com
(651) 336-8696

Online Resources & Contacts

Minnesota Administrative Rules for Aquatic Plant Management

<https://www.revisor.mn.gov/rules/?id=6280>

Minnesota DNR – Aquatic Plant Management Regulations & Permit Application Forms

<http://www.dnr.state.mn.us/apm/index.html>

Christine Jurek

Invasive Species Specialist

Minnesota DNR

christine.jurek@state.mn.us

(320) 223-7847

Wendy Crowell

ALS Management Coordinator

Minnesota DNR

wendy.crowell@state.mn.us

(651) 259-5085