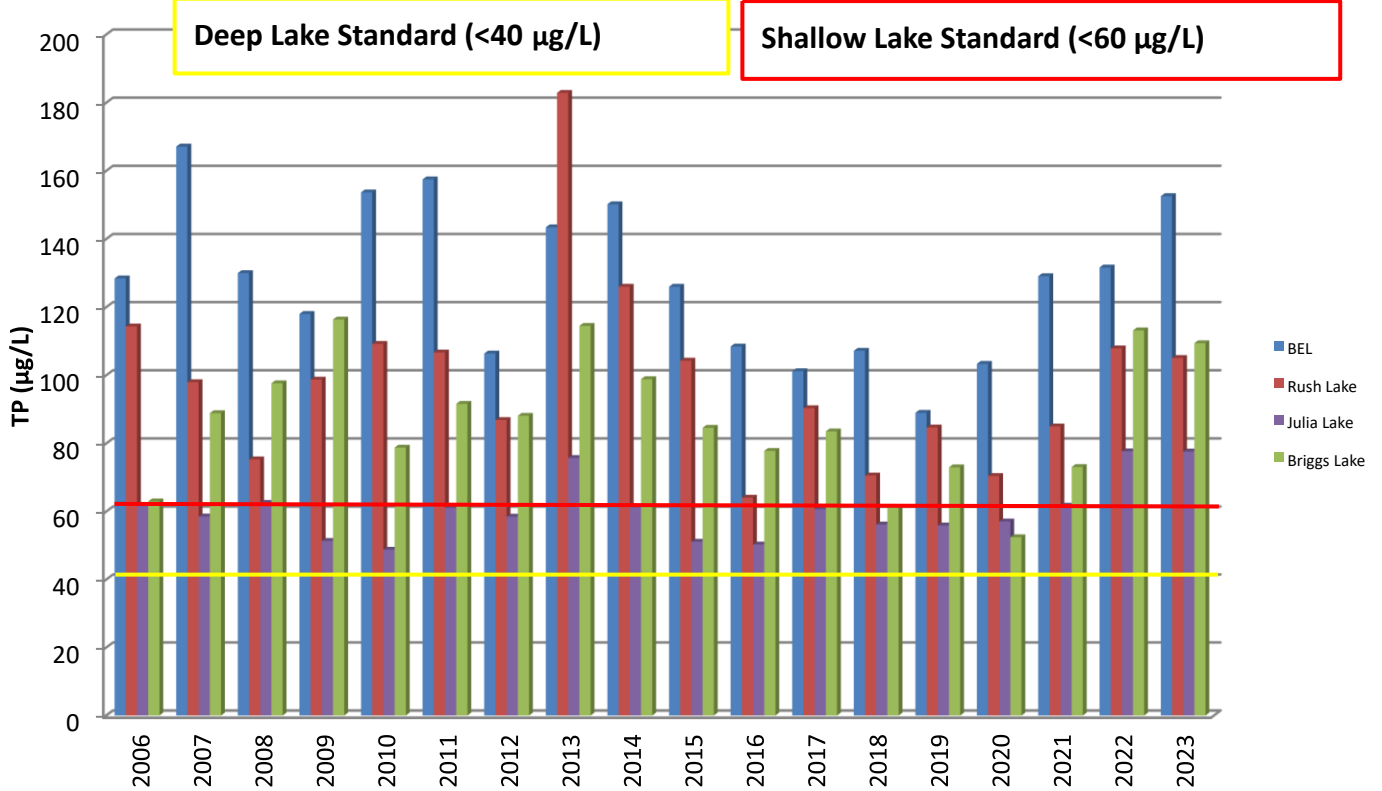
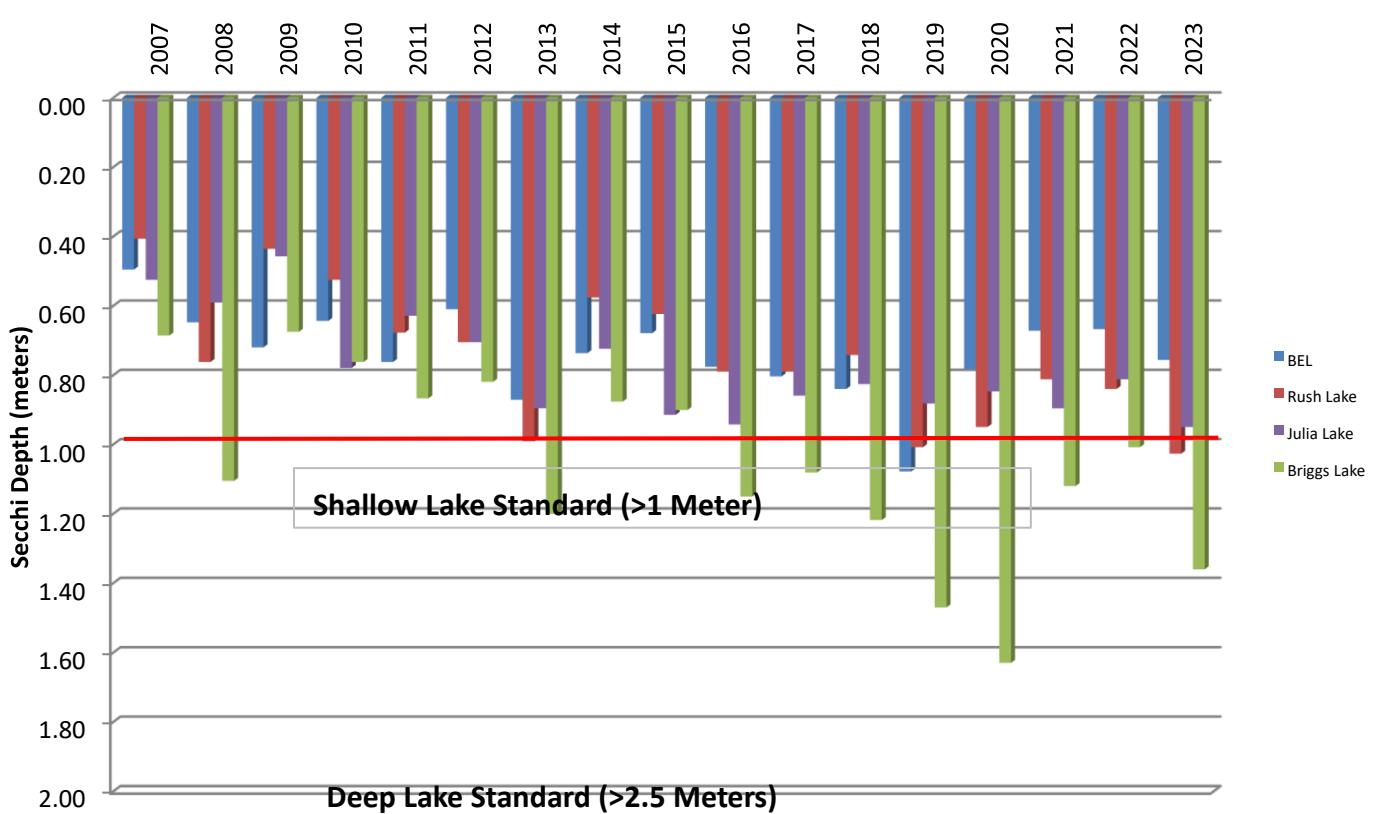


## Summer Ave. Total Phosphorus for the Briggs Chain ( $\mu\text{g/L}$ )



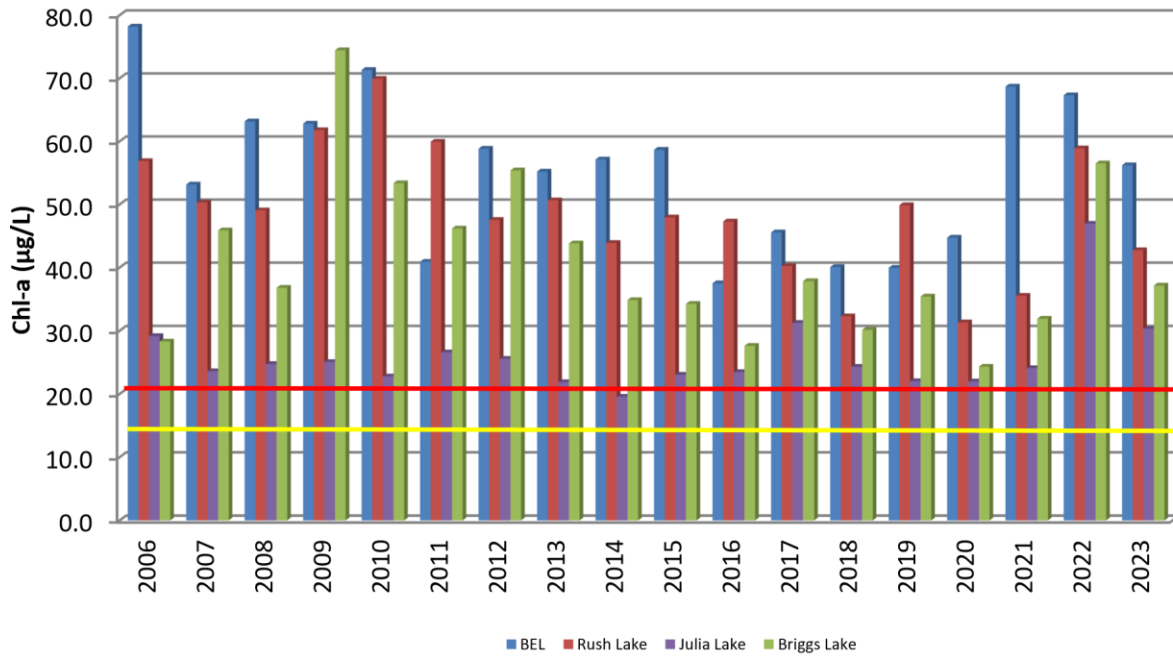
## Summer Ave. Secchi Depth for the Briggs Chain (meters)



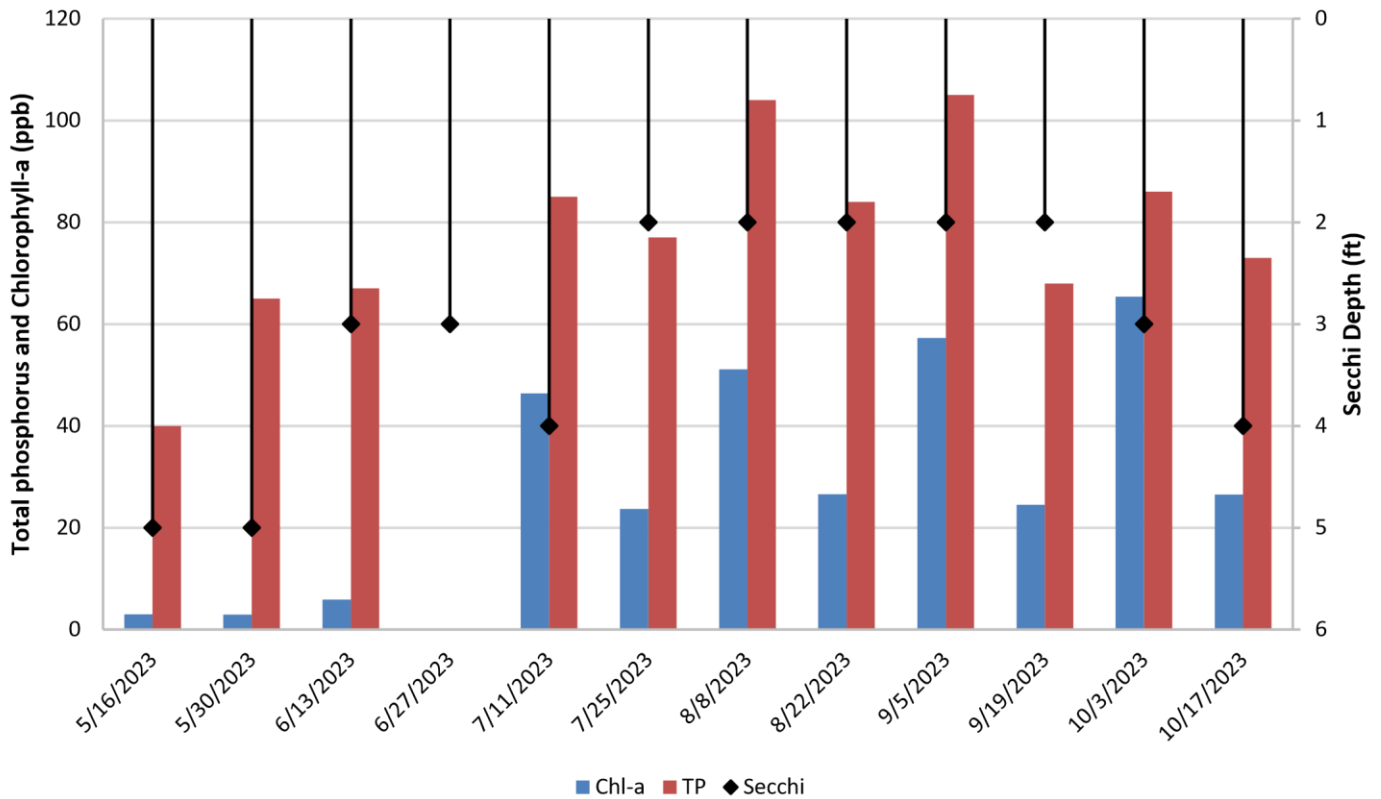
## Summer Ave. Chlorophyll-a for the Briggs Chain ( $\mu\text{g/L}$ )

Deep Lake Standard ( $<14 \mu\text{g/L}$ )

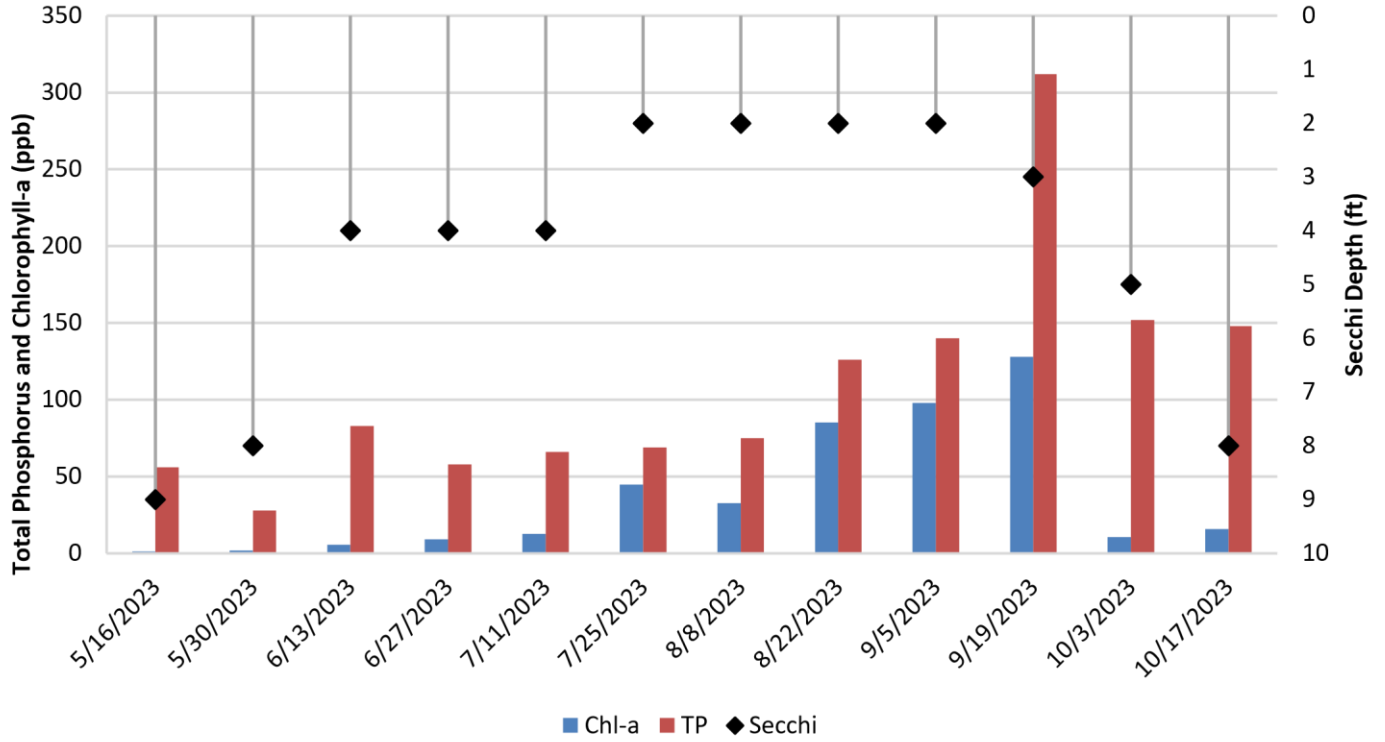
Shallow Lake Standard  $<20 \mu\text{g/L}$



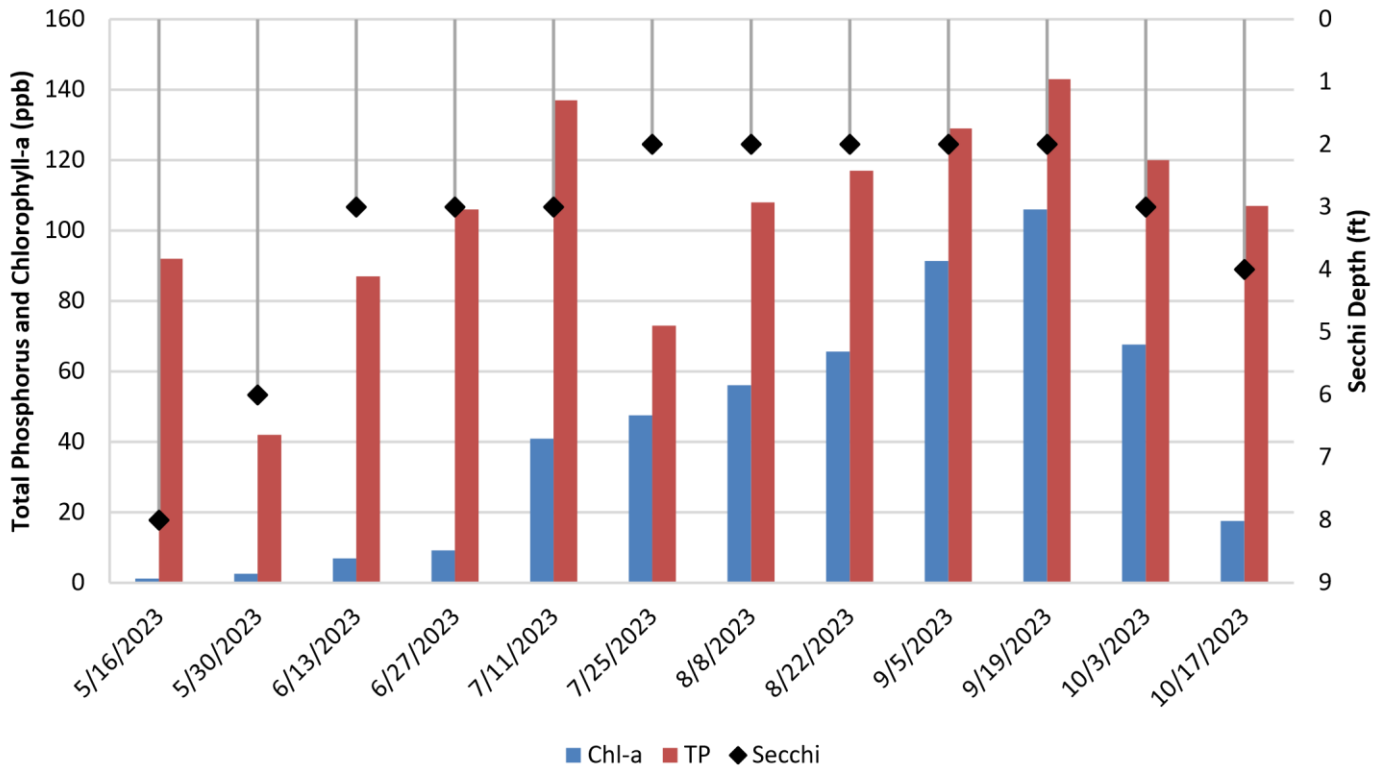
## Julia Lake 2023 Water Quality



### Briggs Lake 2023 Water Quality



### Rush Lake 2023 Water Quality



# Big Elk Lake 2023 Water Quality

