

# Curlyleaf Pondweed in the Briggs Chain of Lakes: 2024

**Briggs Lake** (#71-0146)

**Julia Lake** (#71-0145)

**Rush Lake** (#71-0147)

Surveyed April 2, 2024



## Survey, Analysis, and Reporting by:

James A. Johnson – *Aquatic Ecologist, Freshwater Scientific Services, LLC*



**Certified Lake Manager**  
[www.NALMS.org](http://www.NALMS.org)

## Purpose of Survey

These surveys were conducted to locate and delineate areas of curlyleaf pondweed (CLP) in Briggs Lake, Julia Lake, and Rush Lake in the spring of 2024. This information is intended to guide CLP management and meet DNR permit requirements.

## Survey Method

### CLP Delineation Surveys

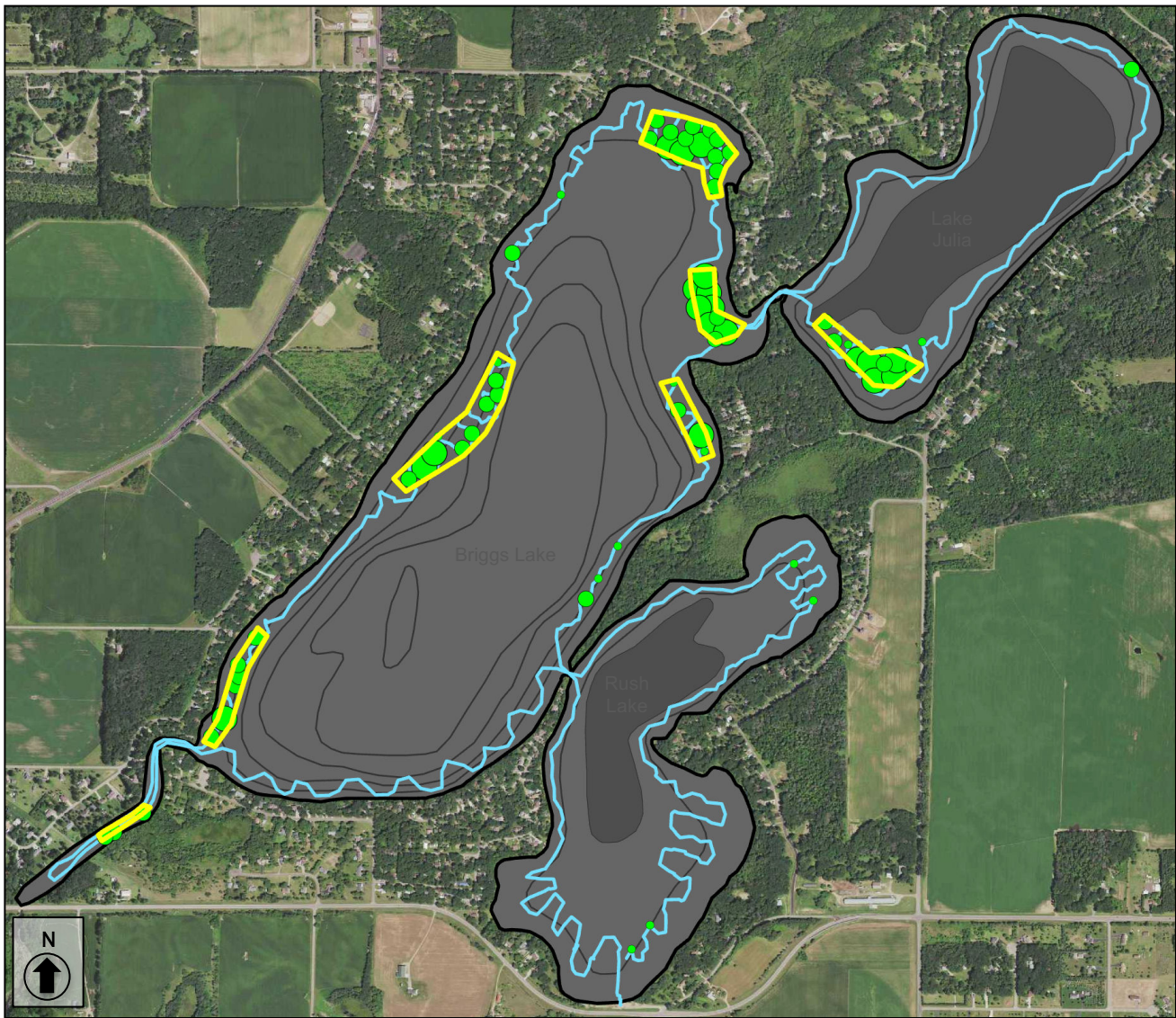
Freshwater Scientific Services surveyed Rush, Briggs, and Julia Lake on April 2, 2024. During this survey, we navigated a meandering search path over the vegetated portions of each lake, with additional focus on those areas where we have found denser CLP in the past. While navigating this search path, we used a combination of surface observations, rake tosses, and sonar readings, to locate and delineate areas of CLP growth. Sonar and visual assessments were conducted continuously, with subsequent rake tosses to assess CLP abundance at locations where plants were not identifiable from the surface. When we encountered CLP plants, we marked the location, recorded the water depth, and rated the density of the growth using visual and rake density scores as described in the table below.

Score	Visual	Rake
1	Light / Solitary plants	1-2 stems
2	Moderate / Scattered dense patches	3 to 9 stems
3	Dense / Uniform dense growth	10+ stems

For rake samples, we dragged a sampling rake over approximately 10 square feet of lake bottom and recorded the CLP density based upon the number of plants (stem count) retrieved on the rake. The recorded water depths and density scores were linked to the appropriate GPS locations and then mapped using desktop GIS software.

# Briggs Chain of Lakes

## 2024 Curlyleaf Pondweed Delineation Survey




**Curlyleaf Pondweed**

- Proposed Plots

**CLP Density**

- 1
- 2
- 3

**Surveyed:** April 2, 2024  
**Methods:** Rake, Visual, Sonar  
**Surveyor:** JA Johnson

 **Certified Lake Manager**  
[www.NALMS.org](http://www.NALMS.org)

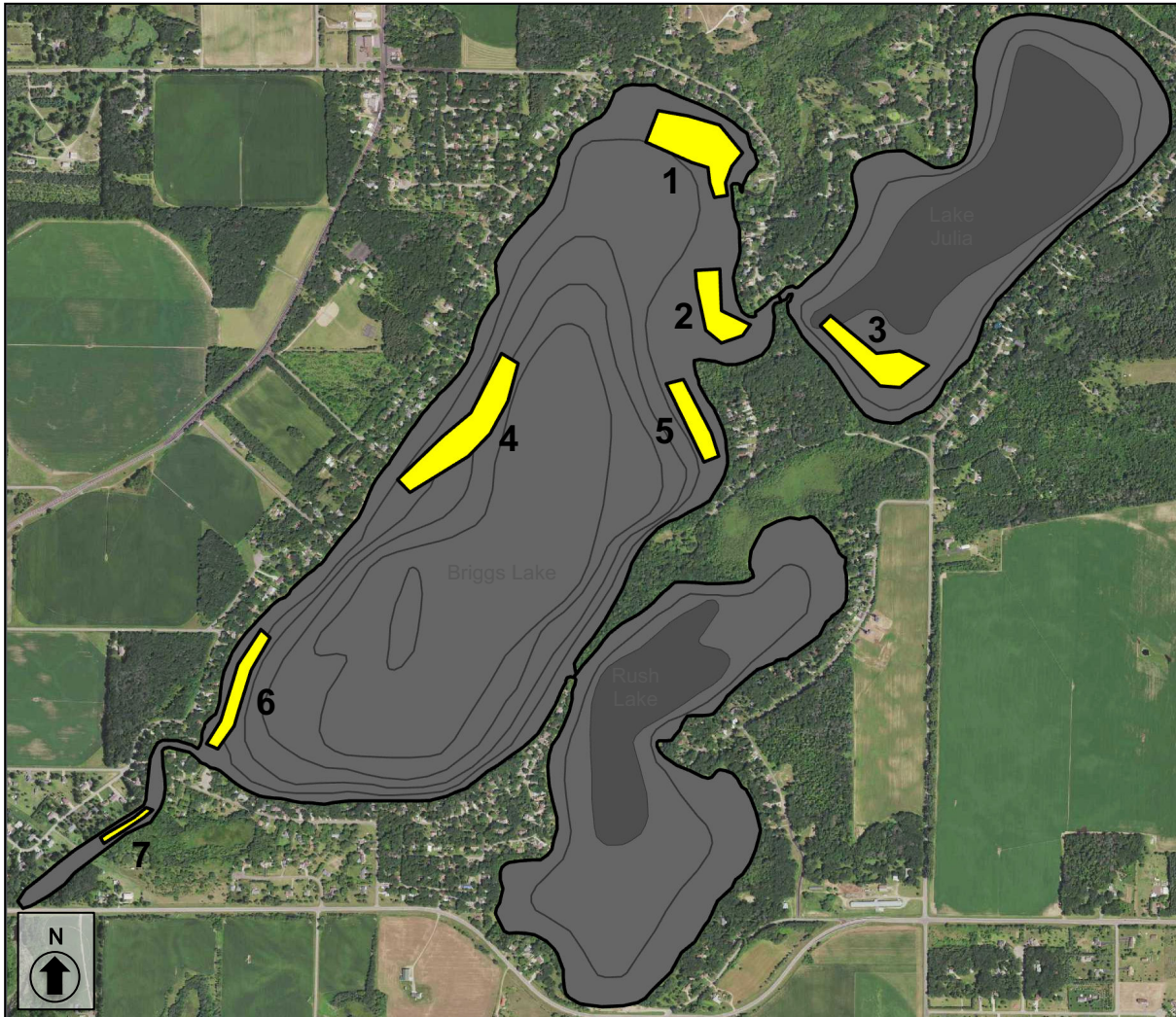
Map produced for the  
Three Lake Improvement District by:

  
15771 Creekside Lane  
Osseo, MN 55369  
[fixmylake.com](http://fixmylake.com)  
(651) 336-8696



# Briggs Chain of Lakes

## 2024 Curlyleaf Pondweed Delineation Survey



### Proposed 2024 Treatment Plots

Plot	Acres	Mean Depth (ft)	Mean CLP (1-3)
1	8.1	4.3	2.2
2	4.0	4.1	2.8
3	5.3	5.4	2.4
4	9.1	3.6	2.0
5	3.2	3.8	1.8
6	3.6	3.0	2.2
7	0.7	1.5	2.0

**Total 34.0 acres**

**Briggs: 28.7 ac**  
**Julia: 5.3 ac**  
**Rush: 0.0 ac**

**Surveyed:** April 2, 2024  
**Methods:** Rake, Visual, Sonar  
**Surveyor:** JA Johnson



Map produced for the  
 Three Lake Improvement District by:



15771 Creekside Lane  
 Osseo, MN 55369  
 fixmylake.com  
 (651) 336-8696

## ***Online Resources & Contacts***

Minnesota Administrative Rules for Aquatic Plant Management

<https://www.revisor.mn.gov/rules/?id=6280>

Minnesota DNR – Aquatic Plant Management Regulations & Permit Application Forms

<http://www.dnr.state.mn.us/apm/index.html>

### **Christine Jurek**

Invasive Species Specialist

Minnesota DNR

[christine.jurek@state.mn.us](mailto:christine.jurek@state.mn.us)

(320) 223-7847

### **Wendy Crowell**

AIS Management Consultant

Minnesota DNR

[wendy.crowell@state.mn.us](mailto:wendy.crowell@state.mn.us)

(651) 259-5085